

## Safeguarding Adults Policy

Version	Review Date	Updated by	Remarks
2025	31 <sup>st</sup> March	Welfare Officer	

## Datchet Dashers Adult Safeguarding Policy

### **CONTENTS**

#### **SECTION 1: ADULT SAFEGUARDING POLICY**

Policy Objectives

Policy Statement

Application

Commitments

Implementation

Equality

#### **SECTION 2: SUPPORTING INFORMATION**

Key Points

Adult Safeguarding Legislation

Definition of an Adult at Risk

Abuse and Neglect

Wellbeing Principles

Making Safeguarding Personal

Mental Capacity and Decision Making

Recording and Information Sharing

Multi-agency Working

Associated Documents

Glossary

## **SECTION 3: APPENDICES**

Appendix 1: Process Map – Reporting a Concern About an Adult

Appendix 2: Sources of Information and Support

## **SECTION 1: ADULT SAFEGUARDING POLICY**

### **POLICY OBJECTIVES**

This policy and related documents apply to Datchet Dashers and the governing bodies that it is affiliated to:

- UK Athletics (UKA)
- England Athletics (EA)

In this document, any reference to UK Athletics means UK Athletics and the above listed Home Country Athletics Federations (HCAFs).

Most adults are able to live their lives safely and free from harm. However, for some, there may be times when, for a variety of reasons, their ability to keep themselves safe and protect their wellbeing and rights is compromised.

Datchet Dashers is committed to safeguarding adults in line with relevant national legislation, and relevant national and local guidelines.

We will safeguard adults by ensuring that our activities are delivered in a way which keeps all adults safe.

We will develop a culture of zero tolerance of harm to adults, which necessitates:

- the recognition of adults who may be at risk and the circumstances which may increase risk
- knowing how adult abuse, exploitation or neglect manifests itself
- being willing to report safeguarding concerns.

This extends to recognising and reporting harm experienced anywhere, including within our activities, within other organised activities, in the community, in the person's own home and in any care setting.

Datchet Dashers are committed to best safeguarding practice and to uphold the rights of all adults to live a life free from harm from abuse, exploitation and neglect.

The purpose of this policy is to demonstrate the commitment of Datchet Dashers to safeguard adults and to ensure that everyone involved in our sport is aware of:

- the legislation, policy and procedures for safeguarding adults
- their role and responsibility for safeguarding adults

- what to do or who to speak to if they have a concern relating to the welfare or wellbeing of an adult within the organisation.

## **POLICY STATEMENT**

Datchet Dashers believe everyone has the right to live free from abuse or neglect, regardless of age, ability, disability, sex, race, religion, ethnic origin, sexual orientation, marital or gender status.

We are committed to creating and maintaining a safe and positive environment and an open, listening culture where people feel able to share concerns without fear of retribution.

We collectively acknowledge that safeguarding is everybody's responsibility and we are committed to the prevention of abuse and neglect through safeguarding the welfare of all adults involved in our sport.

Datchet Dashers recognise that health, wellbeing, ability, disability and need for care and support can affect a person's resilience. We recognise that some people experience barriers, for example, to communication in raising concerns or seeking help. We recognise that these factors can vary at different points in people's lives.

We recognise that there is a legal framework within which sports need to work to safeguard adults who have needs for care and support, and for protecting those who are unable to take action to protect themselves. We will act in accordance with the relevant safeguarding adult legislation and with local statutory safeguarding procedures.

Actions taken by Datchet Dashers will be consistent with the principles of adult safeguarding, ensuring that any action taken is prompt, proportionate and that it includes and respects the voice of the adult concerned.

## **APPLICATION**

This Adult Safeguarding Policy and associated procedures apply to all individuals involved with the Datchet Dashers and to all concerns about the safety of adults whilst involved in with the Club.

For the avoidance of doubt this includes committee members, coaches, officials, volunteers, members, parents, participants in events operating under a UKA or Home Country licence, individuals or organisations contracted to, or whose services are engaged to deliver programmes and courses on behalf of Datchet Dashers, and anyone working within the sport (in a paid or voluntary capacity), whether as an employee or on a self-employed basis.

## **COMMITMENTS**

To implement this policy, Datchet Dashers will ensure:

- everyone involved in athletics is aware of the safeguarding adult procedures and knows what to do and who to contact if they have a concern relating to the safety or wellbeing of an adult
- any concern that an adult is not safe is taken seriously, responded to promptly, and followed up in line with this policy and associated procedures
- the wellbeing of those at risk of harm will be put first and the adult actively supported to communicate their views and the outcomes they want to achieve. Those views and wishes will be respected and supported unless there are overriding reasons not to (see the Adult Safeguarding Procedures)
- any actions taken will respect the rights and dignity of all those involved and be proportionate to the risk of harm
- confidential, detailed and accurate records of all safeguarding concerns are maintained and securely stored in line with our Data Protection Policy and Procedures
- accordance with best practice advice; for example, from UK Sport, Sport England, Sport Wales, sportscotland, Sport Northern Ireland, National Governing Bodies, NSPCC, Ann Craft Trust and Children 1st
- cooperation with the Police and the relevant Local Authorities in taking action to safeguard an adult
- all committee members, coaches, officials, members, parents and volunteers within Datchet Dashers understand their role and responsibility for safeguarding adults, and have completed and are up to date with safeguarding adult training and learning opportunities appropriate for their role
- the use of safe recruitment practices and continual assessment of the suitability of volunteers in order to prevent the employment/deployment of unsuitable individuals in our organisation and within the athletics community
- a sharing of information with the appropriate bodies about anyone found to be a risk to adults; for example: Disclosure and Barring Service, Disclosure Scotland, Police, Local Authority/Social Services
- the inclusion of a risk assessment when planning activities and events as to the safety of all adults from abuse, exploitation and neglect
- actions taken under this policy are reviewed by the Club committee and Welfare Officer on an annual basis
- this policy, related policies and the associated Adult Safeguarding Procedures are reviewed on a two-yearly basis by Datchet Dashers and whenever there are changes in relevant legislation and/or government guidance as required by the Local Safeguarding Board, UK Sport, Sport England/Wales/Scotland/Northern Ireland and/or National Governing Bodies, or as a result of any other significant change or event.

## IMPLEMENTATION

Datchet Dashers are committed to developing and maintaining a capability to implement this policy and its procedures. In order to do so, the following will be in place:

- A welfare officer
- A clear line of accountability within the club and relevant governing body for the safety and wellbeing of all adults
- Access to relevant legal and professional advice
- Aligned adult safeguarding procedures that deal effectively with any concerns of abuse or neglect, including those caused through poor practice
- Arrangements to work effectively with other relevant organisations to safeguard and promote the welfare of adults, including arrangements for sharing information
- Codes of conduct for all relevant roles and individuals that specify zero tolerance of abuse in any form
- Risk assessments that specifically include safeguarding of adults
- Policies and procedures that address the following areas and which are consistent with this Adult Safeguarding Policy:
  - ✓ Child safeguarding policy and procedures
  - ✓ Bullying
  - ✓ Social media
  - ✓ Equality, diversity and inclusion
  - ✓ Codes of conduct
  - ✓ Discipline and grievance
  - ✓ Concerns and complaints
  - ✓ Whistleblowing
  - ✓ Safe recruitment and selection of staff and volunteers
  - ✓ Information policy, data protection and information sharing
  - ✓ Adult Safeguarding Procedures (Responding to and managing a concern about an adult).

## EQUALITY

Datchet Dashers endorse the principle of equality and will strive to ensure that everyone who wishes to be involved in athletics (in all its disciplines and forms):

- has a genuine and equal opportunity to participate to the full extent of their own ambitions and abilities, without regard to their age, sex, gender identity, disability, marital or civil partnership status, pregnancy or maternity, religion, race, socio-economic status or sexual orientation
- can be assured of an environment in which their rights, dignity and individual worth are respected and, in particular, that they are able to enjoy their sport without the threat of intimidation, victimisation, harassment or abuse.

## SECTION 2: SUPPORTING INFORMATION

### KEY POINTS

- There is a legal duty on Local Authorities to provide support to 'adults at risk'.
- Adults at risk are defined in legislation and the criteria applied differs between each Home Country (see definitions for each Home Country in Table 1).
- The safeguarding legislation applies to all forms of abuse that harm a person's wellbeing.
- The law provides a framework for good practice in safeguarding that makes the overall wellbeing of the adult at risk a priority of any intervention.
- The law in all four Home Countries emphasises the importance of person centred safeguarding.
- The law provides a framework for making decisions on behalf of adults who can't make decisions for themselves (mental capacity).
- The law provides a framework for sports organisations to share concerns they have about adults at risk with the Local Authority.
- The law provides a framework for all organisations to share information and cooperate to protect adults at risk.

### ADULT SAFEGUARDING LEGISLATION

Safeguarding adults in all Home Countries is compliant with United Nations directives on the rights of disabled people and commitments to the rights of older people. It is covered by:

- The Human Rights Act 1998
- The Data Protection Act 2018
- General Data Protection Regulations 2018.

The practices and procedures within this policy are based on the relevant legislation and government guidance:

- **England** – The Care Act 2014 Care and Support Statutory Guidance (especially Chapter 14) 2014
- **Wales** – Social Services and Wellbeing Act 2014 Wales Safeguarding Procedures 2019
- **Scotland** – Adult Support and Protection (Scotland) Act 2007 Code of Practice 2014
- **Northern Ireland** – Adult Safeguarding Prevention and Protection in Partnership 2015. Many other pieces of UK and Home Country legislation also affect adult safeguarding.

These include legislation about different forms of abuse and those that govern information sharing. For example, legislation dealing with:

- Murder/attempted murder



- Sexual offences
- Forced marriage
- Theft and fraud
- Physical assault
- Domestic abuse/Coercive control
- Female genital mutilation
- Modern slavery and human exploitation
- Harassment
- Hate crime
- Listing and barring of those unsuitable to work with adults with care and support needs.

Each Home Country also has legislation about the circumstances in which decisions can be made on behalf of an adult who is unable to make decisions for themselves:

- England and Wales – Mental Capacity Act 2005
- Scotland – Adults with Incapacity (Scotland) Act 2000
- Mental Capacity (Northern Ireland) 2016.

There are specific offences applying to the mistreatment of, and sexual offences against, adults who do not have mental capacity, and specific offences where mistreatment is carried out by a person who is employed as a carer (e.g. willful neglect and willful mistreatment).

## **DEFINITION OF AN ADULT AT RISK**

Adult safeguarding legislation creates specific responsibilities for Local Authorities, Health Authorities and the Police to provide additional protection to adults at risk from abuse and neglect.

When a Local Authority has reason to believe there is an adult at risk, they have a responsibility to find out more about the situation and decide what actions need to be taken to support the adult. In Scotland and Wales, the Local Authority can gain access to an adult to find out if they are at risk of harm for example, if that access is being blocked by another person.

The actions that need to be taken might be by the Local Authority (usually Social Services) and/or by other agencies; for example, the Police and Health Authorities. In athletics, we may need to act as part of safeguarding an adult; for example, to use the disciplinary procedures in relation to a member of staff or volunteer who has been reported to be harming a participant in our sport. The Local Authority role includes having multi-agency procedures which coordinate the actions taken by different organisations.

**Table 1: The definitions of an ‘adult at risk’ vary across the Home Countries**

**England (The Care Act 2014)**

An **adult at risk** is an individual aged 18 years and over who:

(a) has needs for care and support (whether or not the Local Authority is meeting any of those needs) **and**

(b) is experiencing, or at risk of, abuse or neglect **and**

(c) as a result of those care and support needs is unable to protect themselves from either the risk of, or the experience of, abuse or neglect.

An **adult at risk of harm** is a person aged 18 or over, whose exposure to harm through abuse, exploitation or neglect **may** be increased by their a) personal characteristics and/or b) life circumstances.

1. **a) Personal characteristics** may include, but are not limited to: age, disability, special educational needs, illness, mental or physical frailty or impairment of, or disturbance in, the functioning of the mind or brain.
2. **b) Life circumstances** may include, but are not limited to: isolation, socioeconomic factors and environmental living conditions.

An **adult in need of protection** is a person aged 18 or over, whose exposure to harm through abuse, exploitation or neglect **may** be increased by their

a) personal characteristics and/or

b) life circumstances **and**

c) who is unable to protect their own wellbeing, property, assets, rights or other interests **and**

d) where the action or inaction of another person or persons is causing, or is likely to cause, him/her to be harmed.

In order to meet the definition of an 'adult in need of protection' either (a) or (b) must be present, in addition to both elements (c) and (d).

### **Scotland (Adult Support and Protection Act 2007)**

An **adult at risk** is an individual aged 16 years and over who:

a) is unable to safeguard their own wellbeing, property, rights or other interests b) is at risk of harm, **and**

c) because they are affected by disability, mental disorder, illness or physical or mental infirmity, is more vulnerable to being harmed than adults who are not so affected.

An **adult at risk** is an individual aged 18 years and over who: a) is experiencing or is at risk of abuse or neglect, **and**

b) has needs for care and support (whether or not the Local Authority is meeting any of those needs) **and**

c) as a result of those needs is unable to protect himself or herself against abuse or neglect, or the risk of it.

## **ABUSE AND NEGLECT**

Abuse is a violation of an individual's human and civil rights by another person or persons. It can occur in any relationship and may result in significant harm to, or exploitation of, the person subjected to it. Any or all of the following types of abuse may be perpetrated as the result of deliberate intent, negligence, omission or ignorance.

There are different types and patterns of abuse and neglect, and different circumstances in which they may take place.

Safeguarding legislation in each Home Country lists categories of abuse differently. However, they all include the following types of abuse:

- Physical
- Sexual
- Psychological
- Neglect • Financial.

Abuse can take place in any relationship and there are many contexts in which abuse might take place. For example, institutional abuse, domestic abuse, forced marriage, human trafficking, modern slavery, sexual exploitation, county lines, radicalisation, hate crime, mate crime, cyberbullying and scams. Some of these are named specifically within Home Country legislations.

Abuse can take place within a sporting context and the person causing harm might be any other person. For example, a member of staff, a coach, a volunteer, a participant or a fan.

Some examples of abuse within sport include:

- harassment of a participant because of their (perceived) disability or other protected characteristics
- not meeting the needs of the participant (e.g. training without a necessary break)
- a coach intentionally striking an athlete
- an official or coach who sends unwanted sexually explicit text messages to a participant with learning disabilities

- a participant who threatens another participant with physical harm and persistently blames them for poor performance.

Abuse or neglect outside sport could be carried out by:

- a spouse, partner or family member
  - neighbours or residents
  - friends, acquaintances or strangers
  - people who deliberately exploit adults they perceive as vulnerable
  - paid staff, professionals or volunteers providing care and support.
- Often, the perpetrator is known to the adult and may be in a position of trust and/or power.

**Table 2: Categories of adult abuse and harm in each Home Country’s safeguarding legislation**

<b>England (The Care Act 2014)</b>
<ul style="list-style-type: none"> <li>• Physical</li> <li>• Emotional / psychological / mental</li> <li>• Financial or material abuse</li> <li>• Organisational / institutional</li> <li>• Domestic abuse (including coercive control)</li>   <li>• Sexual</li> <li>• Neglect and acts of omission • Discriminatory</li> <li>• Self-neglect</li> <li>• Modern slavery</li> </ul>
<b>Northern Ireland (Adult Safeguarding Prevention and Protection in Partnership 2015)</b>
<ul style="list-style-type: none"> <li>• Physical</li> <li>• Psychological / emotional • Institutional</li> <li>• Exploitation</li> <li>• Human trafficking</li>   <li>• Sexual violence</li> <li>• Financial</li> <li>• Neglect</li> <li>• Domestic violence • Hate crime</li> </ul>
<b>Scotland (Adult Support and Protection Act 2007)</b>
<ul style="list-style-type: none"> <li>• Physical • Psychological • Financial • Sexual</li> <li>• Neglect</li> </ul>
<b>Wales (Social Services and Wellbeing Act 2014)</b>

• Physical • Sexual • Psychological • Neglect • Financial

## WELLBEING PRINCIPLES

The success of sport, in terms of helping people achieve their potential, making the most of existing talent, and attracting new people to sport, relies on putting people – their safety, wellbeing and welfare – at the centre of what sport does.

Duty of Care in Sport Independent Report to Government (2017)

The concept of ‘wellbeing’ is threaded throughout UK legislation and is part of the law about how health and social care are provided. Our wellbeing includes our mental and physical health, our relationships, our connection with our communities, and our contribution to society.

Being able to live free from abuse and neglect is a key element of wellbeing. The legislation recognises that any actions taken to safeguard an adult must take their whole wellbeing into account and be proportionate to the risk of harm.

## MAKING SAFEGUARDING PERSONAL

The legislation also recognises that adults make choices that may mean that one part of their wellbeing suffers at the expense of another. For example, moving away from friends and family to take a better job. Similarly, adults can choose to risk their personal safety; for example, to provide care to a partner with dementia who becomes abusive when they are disorientated and anxious.

None of us can make these choices for another adult. If we are supporting someone to make choices about their own safety, we need to understand ‘what matters’ to them and what outcomes they want to achieve from any actions we or an agency may take to help them to protect themselves.

The concept of ‘person-centred safeguarding’ means engaging the person in a conversation about how best to respond to their situation in a way that enhances their involvement, choice and control, as well as improving their quality of life, wellbeing and safety. The adult’s views, wishes, feelings and beliefs must be taken into account when decisions are made about how to support them to be safe. There may be many different ways to prevent or reduce the risk of further harm. Working with the person will mean that actions taken help them to find the solution that is right for them. Treating people with respect, enhancing their dignity and supporting their ability to make decisions also helps promote people’s sense of self-worth and supports recovery from abuse.

If someone has difficulty making their views and wishes known, then they can be supported or represented by an advocate. This might be a safe family member or friend of their choice, or a professional advocate (usually from a third sector organisation).

### Table 3: The principles of adult safeguarding in each Home Country

### **Scotland (Adult Support and Protection Act 2007)**

The overarching principle underlying Part 1 of the Act is that any intervention in an individual's affairs should provide benefit to the individual and should be the least restrictive option of those available to meet the purpose of the intervention.

This is supported by a set of guiding principles which, together with the overarching principle, must be taken account of when performing functions under Part 1 of the Act. These are:

- the wishes and feelings of the adult at risk (past and present)
- the views of other significant individuals, such as the adult's nearest relative; their primary carer,

guardian or attorney; or any other person with an interest in the adult's wellbeing or property

- the importance of the adult taking an active part in the performance of the function under the Act
- providing the adult with the relevant information and support to enable them to participate as fully as possible
- the importance of ensuring that the adult is not treated less favourably than another adult in a comparable situation
- the adult's abilities, background and characteristics (including their age, sex, sexual orientation, gender, religious persuasion, racial origin, ethnic group and cultural and linguistic heritage).

The Act's principles are:

- **responsibility** – safeguarding is everyone's responsibility
- **wellbeing** – any actions taken must safeguard the person's wellbeing
- **a person-centred approach** – understand what outcomes the adult wishes to achieve and what matters to them
- **voice and control** – expect people to know what is best for them and support them to be involved in decision making about their lives
- **language** – make an active offer of use of the Welsh language and use professional interpreters where other languages are needed
- **prevention** – it is better to take action before harm occurs.

### **Northern Ireland (Adult Safeguarding Prevention and Protection in Partnership 2015)**

The Act's principles are:

- **a rights-based approach** – to promote and respect an adult's right to be safe and secure, to freedom from harm and coercion, to equality of treatment, to the protection of the law, to privacy, to confidentiality, and freedom from discrimination
- **an empowering approach** – to empower adults to make informed choices about their lives, to maximise their opportunities to participate in wider society, to keep themselves safe and free from harm, and to enable them to manage their own decisions in respect of exposure to risk
- **a person-centred approach** – to promote and facilitate full participation of adults in all decisions affecting their lives, taking full account of their views, wishes and feelings and, where appropriate, the views of others who have an interest in their safety and wellbeing
- **a consent-driven approach** – to make a presumption that the adult has the ability to give or withhold consent, to make informed choices, to help inform choice through the provision of information and the identification of options and alternatives, to have particular regard to the needs of individuals who require support with communication, advocacy or who lack the capacity to

consent, and intervening in the life of an adult against his or her wishes only in particular circumstances, for very specific purposes and always in accordance with the law

- **a collaborative approach** – to acknowledge that adult safeguarding will be most effective when it has the full support of the wider public and of safeguarding partners across the statutory, voluntary, community, independent and faith sectors working together, and is delivered in a way where roles, responsibilities and lines of accountability are clearly defined and understood. Working in partnership and a person-centred approach will work hand-in-hand.

The Act's principles are:

- **empowerment** – people being supported and encouraged to make their own decisions and informed consent
- **prevention** – it is better to take action before harm occurs
- **proportionality** – the least intrusive response appropriate to the risk presented
- **protection** – support and representation for those in greatest need
- **partnership** – local solutions through services working with their communities. Communities have a part to play in preventing, detecting and reporting neglect and abuse
- **accountability** – accountability and transparency in delivering safeguarding.

## MENTAL CAPACITY AND DECISION MAKING

We make many decisions every day, often without realising. UK law assumes that all people over the age of 16 have the ability to make their own decisions, unless it has been proven that they can't. It also gives us the right to make any decision that we need to make and gives us the right to make our own decisions even if others consider them to be unwise.

We make so many decisions that it is easy to take this ability for granted. Law states that to make a decision we need to:

- Understand information
- Remember it for long enough
- Think about the information
- Communicate our decision

A person's ability to do this may be affected by things such as learning disability, dementia, mental health needs, acquired brain injury and physical ill health. Most adults have the ability to make their own decisions given the right support. However, some adults with care and support needs have the experience of other people making decisions about them and for them.

Some people can only make simple decisions like which colour T-shirt to wear or can only make decisions if a lot of time is spent supporting them to understand the options. If someone has a disability that means they need support to understand or make a decision, this must be provided. A small number of people cannot make any decisions. Being unable to make a decision is called 'lacking mental capacity'.

Mental capacity refers to the ability to make a decision at the time when a decision is needed. A person's mental capacity can change. If it is safe/possible, wait until they are able to be involved in decision making or to make the decision themselves.

For example:

- A person with epilepsy may not be able to make a decision following a seizure.
- Someone who is anxious may not be able to make a decision at that point.
- A person may not be able to respond as quickly if they have just taken some medication that causes fatigue.

Mental capacity is important for safeguarding for several reasons.

Where an adult is being abused and they are scared of the consequences of going against the views of the person abusing them. It is recognised in the law as coercion and a person can be seen not to have mental capacity because they cannot make free and informed decisions.



Mental capacity must also be considered when we believe abuse or neglect might be taking place. It is important to make sure an 'adult at risk' has choices in the actions taken to safeguard them, including whether or not they want other people informed about what has happened. However, in some situations, the adult may not have the mental capacity to understand the choice or to tell you their views.

Each Home Country has legislation that describes when and how we can make decisions for people who are unable to make decisions for themselves. The principles are the same.

- We can only make decisions for other people if they cannot do that for themselves at the time the decision is needed.
- If the decision can wait, then wait – for example, to get help to help the person make their decision or until they can make it themselves.
- If we have to make a decision for someone else then we must make the decision in their best interests (for their benefit) and take into account what we know about their preferences and wishes.
- If the action we are taking to keep people safe will restrict them, then we must think of the way to do it which restricts their freedom and rights as little as possible.

Many potential difficulties with making decisions can be overcome with preparation. A person needing support to help them make decisions whilst taking part in a sports organisation will ordinarily be accompanied by someone (e.g. a family member or formal carer whose role includes supporting them to make decisions).

It is good practice to get as much information about the person as possible.

Some people with care and support needs will have a 'One-page profile' or a 'This is me' document that describes important things about them. Some of those things will be about how to support the person, their routines, food and drink choices etc., but will also include things they like and don't like doing. It's also important to have an agreement with the person who has enrolled the adult in the sports activity about how different types of decisions will be made on a day-to-day basis.

If a person who has a lot of difficulty making their own decisions is thought to be being abused or neglected, you will need to refer the situation to the Local Authority, and this should result in health or social care professionals making an assessment of mental capacity and/or getting the person the support they need to make decisions (see the Adult Safeguarding Procedures for guidance).

There may be times when we need to make decisions on behalf of an individual in an emergency.

Decisions taken to safeguard an adult who cannot make the decision for themselves could include:

- sharing information about safeguarding concerns with people that can help protect them

- stopping them being in contact with the person causing harm.

## **RECORDING AND INFORMATION SHARING**

UK Athletics, the four HCAFs and affiliated clubs and organisations must comply with the Data Protection Act (DPA) and the General Data Protection Regulations (GDPR).

Information gathered when responding to concerns of abuse will include personal data. It is therefore important to be clear as to the grounds for processing and sharing information about concerns of abuse.

Processing information includes record-keeping. Records relating to safeguarding concerns must be accurate and relevant. They must be stored confidentially with access only to those with a need to know.

Sharing information, with the right people, is central to good practice in safeguarding adults. However, information sharing must only ever be with those with a 'need to know'. This does NOT automatically include the person's spouse, partner, adult, child, unpaid or paid carer. Information should only be shared with family and friends and/or carers with the consent of the adult, or if the adult does not have capacity to make that decision and family/friends/carers need to know in order to help keep the person safe.

The purpose of Data Protection legislation is not to prevent information sharing but to ensure personal information is only shared appropriately. Data protection legislation allows information sharing within an organisation. For example:

- Anyone who has a concern about harm can make a report to an appropriate person within the same organisation.
- Case management meetings can take place to agree to coordinate actions by the organisation.

There are situations in which it is perfectly legal to share information about adult safeguarding concerns outside of athletics. Importantly, personal information can be shared with the consent of the adult concerned. However, the adult may not always want information to be shared. This may be because they fear repercussions from the person causing harm or are scared that they will lose control of their situation to statutory bodies, or because they feel stupid or embarrassed. Their wishes should be respected unless there are overriding reasons for sharing information.

The circumstances when we need to share information without the adult's consent include those where:

- it is not safe to contact the adult to gain their consent – i.e. it might put them or the person making contact at further risk
- you believe they or someone else is at risk, including children
- you believe the adult is being coerced or is under duress

- it is necessary to contact the Police to prevent a crime, or to report that a serious crime has been committed
- the adult does not have mental capacity to consent to information being shared about them
- the person causing harm has care and support needs
- the concerns are about an adult at risk living in Wales or Northern Ireland (where there is a duty to report to the Local Authority).

When information is shared without the consent of the adult, this must be explained to them, when it is safe to do so, and any further actions should still fully include them.

If you are in doubt as to whether to share information, seek advice from the UK Athletics Safeguarding Team and/or contact the relevant Local Authority and explain the situation without giving personal details about the person at risk or the person causing harm.

Any decision to share or not to share information with an external person or organisation must be recorded, together with the reasons to share or not to share information.

## **MULTI-AGENCY WORKING**

Adult safeguarding legislation gives the lead role for adult safeguarding to the Local Authority. However, it is recognised that safeguarding can involve a wide range of organisations.

In athletics, we may need to cooperate with the Local Authority and the Police to:

- provide more information about the concern you have raised
- provide a safe venue for the adult to meet with other professionals (e.g. Police/social workers/ advocates)
- attend safeguarding meetings
- coordinate internal investigations (e.g. complaints, disciplinary) with investigations by the Police or other agencies
- share information about the outcomes of internal investigations
- provide a safe environment for the adult to continue their sporting activity/their role in the organisation.

More detail on multi-agency working is provided within the Adult Safeguarding Procedures.

## **ASSOCIATED DOCUMENTS**

This policy should be read in conjunction with the following documents, policies and procedures:

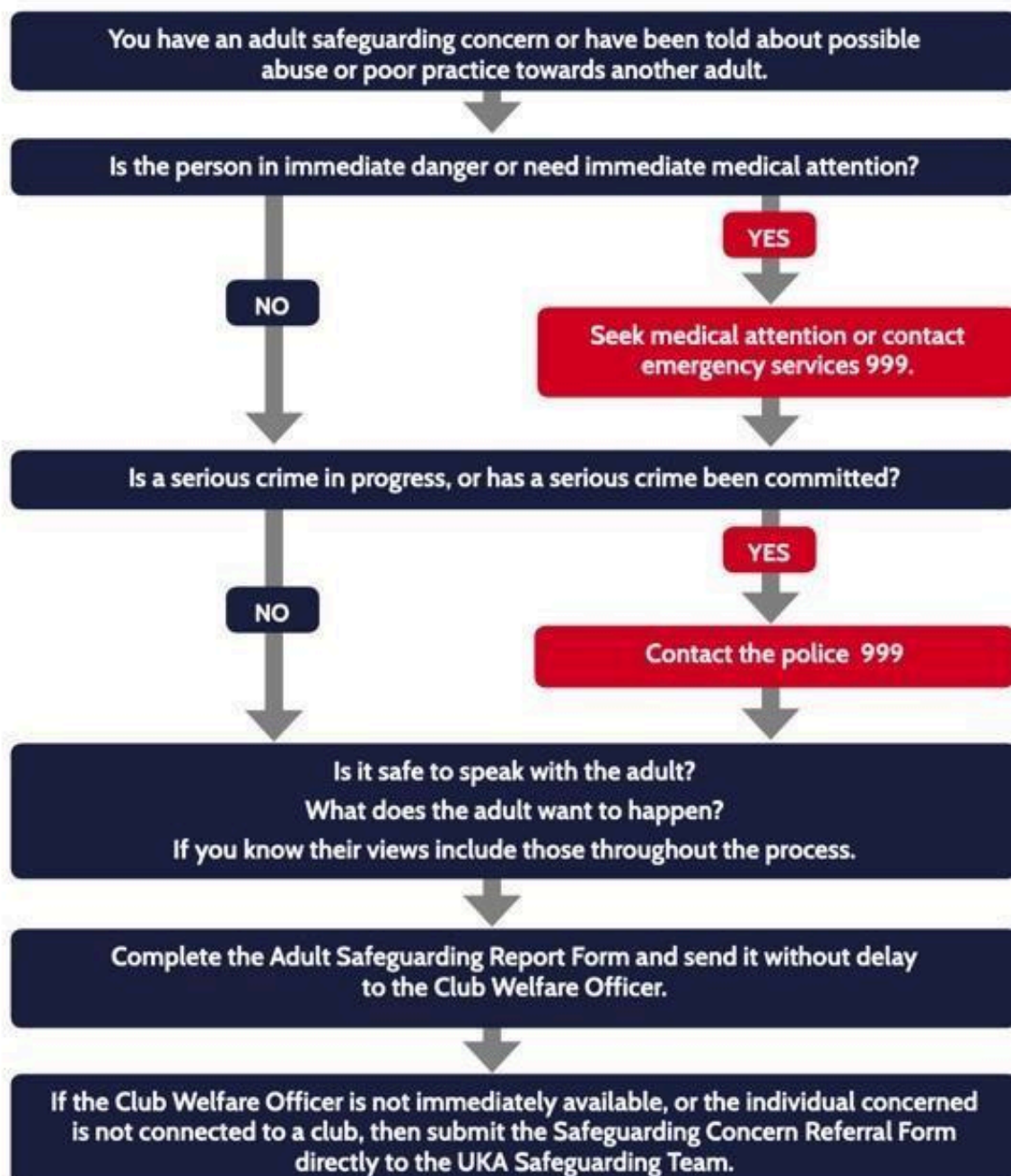
- Codes of Conduct
- Adult Safeguarding Procedures (Responding to and Managing a Concern About an Adult)

## GLOSSARY

- **LSO** – Lead Safeguarding Officer for UK Athletics or the relevant Home Country
- **CWO** – Club Welfare Officer
- **Multi-agency Safeguarding Hub (MASH)** – Facilitate information-sharing and decision-making on a multi-agency basis between Local Authorities, health agencies and the Police
- **DBS** – Disclosure and Barring Service in England and Wales
- **PVG** – Protection of Vulnerable Groups system operated by Disclosure Scotland
- **AccessNI** – Protection of Vulnerable Groups system operating in Northern Ireland
- **ACT** – Ann Craft Trust
- **Adult at risk** – Those who fulfil the criteria set out in each Home Country (Table 1)
- **Adult in need of care and support** – Determined by a range of factors, including personal characteristics, factors associated with their situation, or environment and social factors. A person's disability or condition does not mean that they will inevitably experience harm or abuse
- **Affiliated club** – Means any voluntary club, non-voluntary organisation or virtual club affiliated to UKA or the Home Country Affiliated Federations
- **HCAF** – Home Country Athletics Federation.

## SECTION 3: APPENDICES

### APPENDIX 1: PROCESS MAP - REPORTING A CONCERN ABOUT AN ADULT



## **APPENDIX 2: SOURCES OF INFORMATION AND SUPPORT**

### **National Safeguarding Contact Details**

#### GOVERNING BODY

**UK Athletics** - [safeguarding@uka.org.uk](mailto:safeguarding@uka.org.uk) - 07920 532552

**England Athletics** - [welfare@englandathletics.org](mailto:welfare@englandathletics.org) - 07967 317341

**Welsh Athletics** - [safeguardingandwelfare@welshathletics.org](mailto:safeguardingandwelfare@welshathletics.org) - 07792 242153

**Athletics Northern Ireland** - [welfare@athleticsni.org](mailto:welfare@athleticsni.org) - 02890 602707

**Scottish Athletics** - [welfare@scottishathletics.org.uk](mailto:welfare@scottishathletics.org.uk) - 07983 081122

### **Action on Elder Abuse**

A national organisation based in London. It aims to prevent the abuse of older people by raising awareness, encouraging education, promoting research and collecting and disseminating information.

Tel: 020 8765 7000

Email: [enquiries@elderabuse.org.uk](mailto:enquiries@elderabuse.org.uk) [www.elderabuse.org.uk](http://www.elderabuse.org.uk)

### **Ann Craft Trust (ACT)**

A national organisation providing information and advice about adult safeguarding. ACT have a specialist Safeguarding Adults in Sport and Activity team to support the sector.

Tel: 0115 951 5400

Email: [Ann-Craft-Trust@nottingham.ac.uk](mailto:Ann-Craft-Trust@nottingham.ac.uk) [www.anncrafttrust.org](http://www.anncrafttrust.org)

### **Men's Advice Line**

For male domestic abuse survivors. Tel: 0808 801 0327

### **National LGBT+ Domestic Abuse Helpline**

Tel: 0800 999 5428

#### NATIONAL 24-HOUR FREEPHONE DOMESTIC ABUSE HELPLINES

**England** - Tel: 0808 2000 247 - [www.nationaldahelpline.org.uk/Contact-us](http://www.nationaldahelpline.org.uk/Contact-us)

**Northern Ireland** - Tel: 0808 802 1414 [www.dsahelpline.org](http://www.dsahelpline.org)

Twitter: [www.twitter.com/dsahelpline](https://www.twitter.com/dsahelpline)

Facebook: [www.facebook.com/dsahelpline](https://www.facebook.com/dsahelpline)

**Scotland** - Tel: 0800 027 1234 Email: [helpline@sdafmh.org.uk](mailto:helpline@sdafmh.org.uk) Web chat: [sdafmh.org.uk](http://sdafmh.org.uk)

**Wales** - Llinell Gymorth Byw HebOfn/ Live free from fear Helpline Tel: 0808 8010 800  
Type talk: 18001 0808 801 0800  
Text: 078600 77 333

## **Rape Crisis**

Rape Crisis exists to provide a range of facilities and resources to enable the continuance and development of Rape Crisis Groups throughout the UK.  
[www.rapecrisis.co.uk](http://www.rapecrisis.co.uk) [www.rapecrisisscotland.org.uk](http://www.rapecrisisscotland.org.uk)  
<https://rapecrisisni.org.uk>

## **Respond**

Respond provides a range of services to victims and perpetrators of sexual abuse who have learning disabilities, and training and support to those working with them.  
Tel: 020 7383 0700 or 0808 808 0700 (Helpline)  
Email: [services@respond.org.uk](mailto:services@respond.org.uk) [www.respond.org.uk](http://www.respond.org.uk)

## **Stop Hate UK**

Works to challenge all forms of hate crime and discrimination, based on any aspect of an individual's identity. Stop Hate UK provides independent, confidential and accessible reporting and support for victims, witnesses and third parties. 24-hour service:

Telephone: 0800 138 1625  
Web chat: [www.stophateuk.org/talk-to-us](http://www.stophateuk.org/talk-to-us) Email: [talk@stophateuk.org](mailto:talk@stophateuk.org)  
Text: 07717 989 025  
Text relay: 18001 0800 138 1625  
Post: PO Box 851, Leeds LS1 9QS

## **Suzy Lamplugh Trust**

The Trust is a leading authority on personal safety. Its role is to minimise the damage caused to individuals and to society by aggression in all its forms – physical, verbal and psychological. Tel: 020 83921839  
Fax: 020 8392 1830  
Email: [info@suzylamplugh.org](mailto:info@suzylamplugh.org) [www.suzylamplugh.org](http://www.suzylamplugh.org)

## **Victim Support**

Provides practical advice and help, emotional support and reassurance to those who have suffered the effects of a crime. Tel: 0808 168 9111 [www.victimsupport.com](http://www.victimsupport.com)

### **Women's Aid Federation**

Women's Aid is a national domestic violence charity. It also runs a domestic violence online help service.

[www.womensaid.org.uk/information-support](http://www.womensaid.org.uk/information-support) [www.womensaid.scot](http://www.womensaid.scot)  
[www.womensaidni.org](http://www.womensaidni.org)